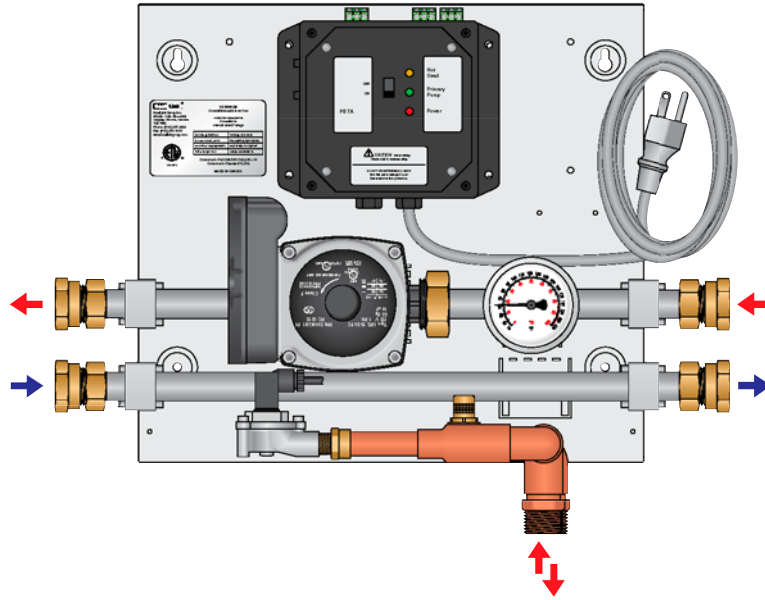
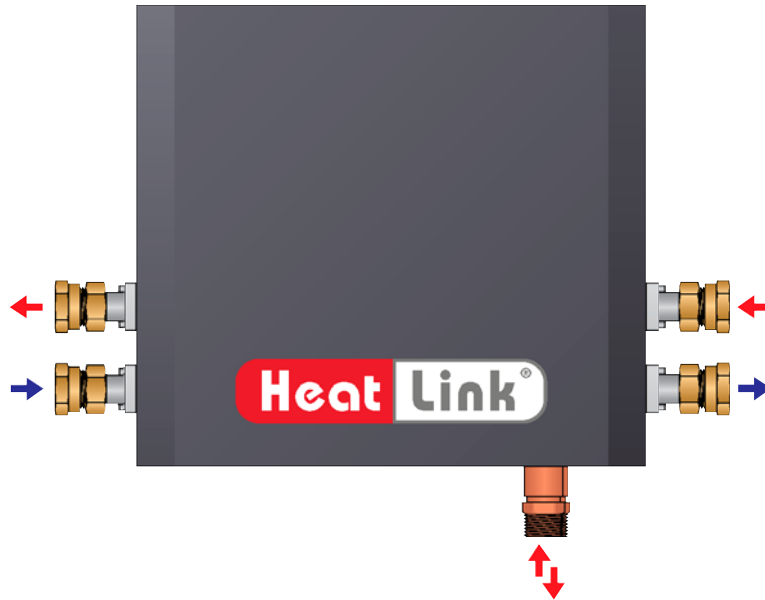




WHP130

Water Heater Pump Panel

Installation, Operation, and Maintenance Manual



MECHANICAL ROOM IN A BOX™

Table Of Contents

Warnings..... 3
Tools Needed 3
Function..... 4
Unpacking..... 4
Panel Components 5
Specifications..... 6
Panel Component Specifications 6-7
Mounting..... 8
Piping Hookup 9
Fill and Purge 10
Panel Wiring 11
Panel Control Sequence..... 12
Troubleshooting 13-14
Maintenance 14
Application Drawing 15

Warnings

The zone control panel is for indoor use only and must be installed by a qualified installer/service technician. This product must be installed and operated in strict accordance with the terms set out in this manual and in accordance with the relevant requirements of the Local Authority Having Jurisdiction. Failure to comply will result in a void of warranty, and may also result in property damage, serious injury, or death.

Servicing

Prior to commencing installation of this panel it is necessary to read and understand all sections of this manual. The symbols below are used throughout this document to ensure proper operation of the panel, and your safety. Please pay attention to these symbols.



Warning
Possible Hazard



Warning
Live Power



Warning
Hot Pipes



Warning
Treated Water



In order to avoid injury or death, switch off the power to the panel prior to inspecting or making connections to the terminal strip.

Disclaimer

HeatLink Group Inc. shall not be responsible for errors in its brochures or printed materials. HeatLink Group Inc. reserves the right to alter its products at any time without notice, provided that alterations to products already on order shall not require material changes in specifications previously agreed upon HeatLink Group Inc. and the Purchaser. All trademarks in this material are property of the respective companies. HeatLink and the HeatLink logotype are trademarks of HeatLink Group Inc. All rights reserved.

Tools For Installation

- Level
- Screwdriver or power drill
- Flat head bit
- Phillips head bit # 2
- 2 adjustable wrenches (or 2x 30mm wrenches)

Function

This panel can provide distribution, and zoning for a wide variety of hydronic heating applications.

The effectiveness of the system is dependant on the system being designed and installed correctly. Proper consideration of factors such as BTU loads, outdoor design temperature, indoor design temperature, room set-point temperature(s), differential fluid temperatures, head loss, flow rates, and transfer capacities of the heat emitters is critical.

Once these factors have been considered and the system requirements determined, these can then be evaluated and compared to the zone control panel capabilities (refer to pages 5-7).

Note: This panel does not regulate or monitor the operating safety limit temperatures of the fluid leaving the heat source.

Unpacking

Step 1 Examine carton for any damage that may have occurred during shipping. If damage is visible notify your courier and supplier immediately.

Step 2 Open the carton by removing the staples.

Step 3 Remove the cardboard spacers from the carton, then remove the panel from the carton. Lift the panel by the base, not the enclosure.

Step 4 There are 2 screws holding the enclosure in place during shipping. They are located at the top left & right of the panel base. Remove these 2 screws.

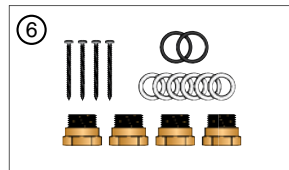
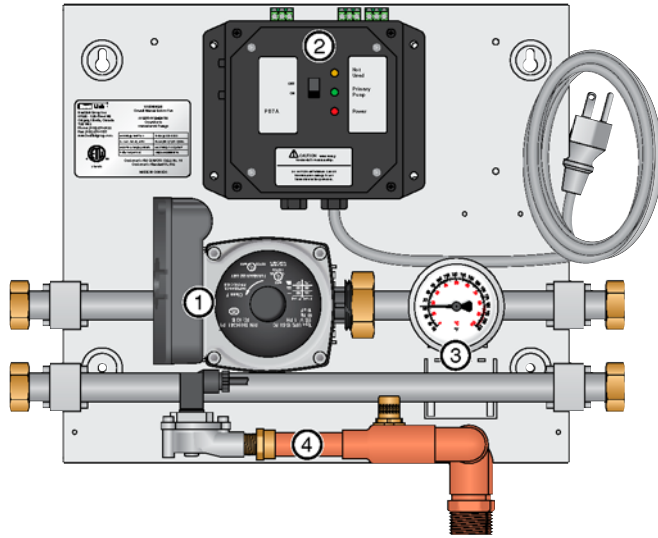
Step 5 Remove the enclosure from the panel by sliding it upwards until it stops, then gently pulling outwards off.



Step 6 Verify the following items:

- (4) Mounting screws
- (4) ¾" MBSP x ¾" FPT adapters
- (6) ¾" rubber washers (2 spares)
- (2) 1" rubber washers (spares)

Panel Components

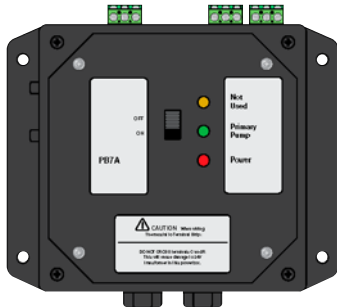


#	Component	Part Number
		WHP130
①	Circulator Grundfos UPS15-58 RU	PUMP1558
②	Power Box with 6' Power Cord	PWRB7AR1
③	Thermometer	76940
④	Flow Indicator Assembly for DHW Priority	HEPPS
⑤	Enclosure	n/a
⑥	Accessory Pack	ACCTMP04
	3/4" Washer	WHTWSH34
	1" Washer	NTRWSH1

Specifications

	WHP130
Listing	cETLus
Conforms to	CAN/CSA-C22 No.14, UL508
Dimensions	12"H x 13.5"W x 7"D
Nominal panel output	130,000 Btu/h
Nominal flow	10 US gpm @ 26°F ΔT
Nominal pressure drop outside of panel	8 ft
Max ambient temperature	120°F
Max water temperature	200°F
Power supply: pre-wired on system controller	110 V(ac)
Circulator	Non-ferrous, Grundfos UPS15-58RU
Auxiliary terminal	Yes
DHW priority	Yes @ ~0.5 US gpm DHW flow
Temperature control method	None
Piping	3/4" 304 Stainless steel tubing
Piping connections	3/4" FIP
DHW priority switch connection	3/4" MIP
Backplate	Galvanized steel
Enclosure	Powder coated steel

Panel Component Specifications



Power Box

This module provides the required power for all electronic components on the panel, via the ON/OFF switch. Power box may not be exactly as shown.

Specifications:

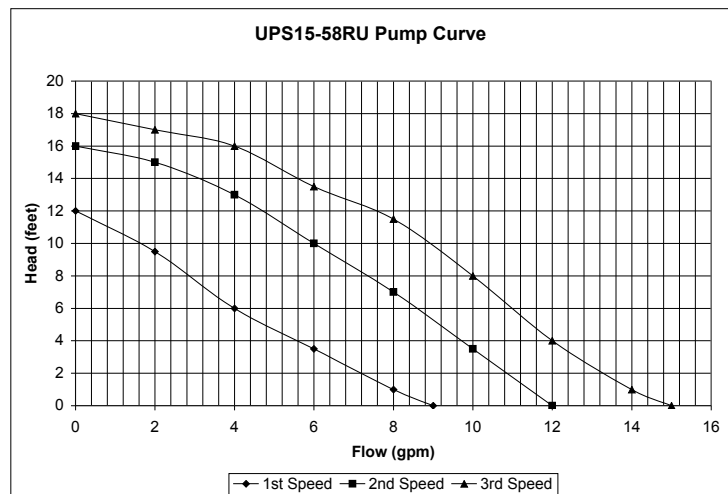
- Requires 115V power source.
- Requires a maximum 15A circuit breaker.

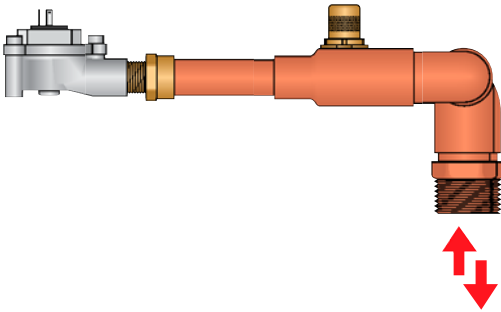
Circulator

The circulator moves the heated fluid through the hydronic system when there is a call for heat from the thermostat. Factory set to 3rd speed.

Specifications:

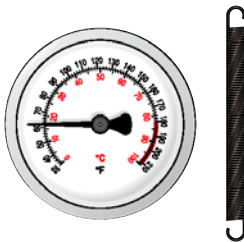
- The following pump curves apply.



**Flow Indicator Assembly for DHW Priority (HEPPS)**

The electronic flow indicator provides DHW priority when the DHW flow rate reaches a factor pre-set level (approx. 0.5 US gpm). Must be piped in downstream of panel (see schematic on page 15).

The balancing valve is factory pre-set. *Do not adjust.*

**Thermometer (76940)**

The pipe mounted thermometer reads the supply fluid temperature.

Specifications:

- Temperature range of 32-210°F (0-100°C).

Mounting

Prior to mounting the panel, ensure the wall is capable of supporting the weight of the panel. Ensure that a 115V receptacle is within reach of the 6-foot cord and plug.

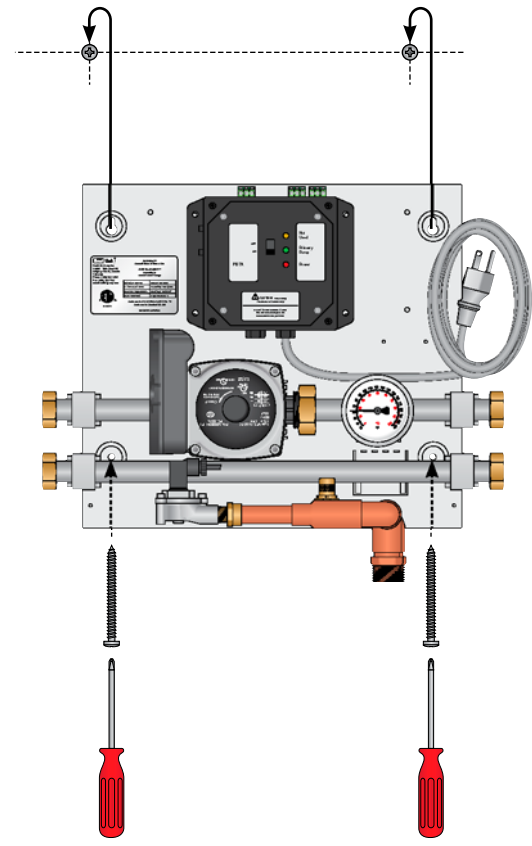
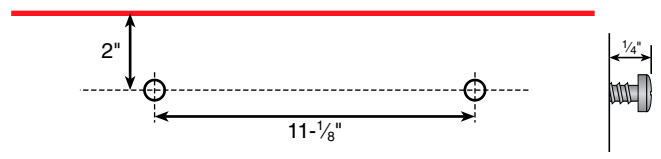
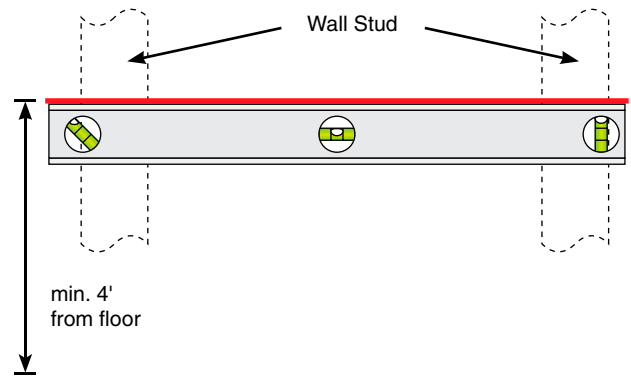
Step 1 Determine the locations and distance between the wall studs. With a level at a minimum height of 4' from the floor draw a straight line on the wall and mark the stud locations. If the panel cannot be secured directly to the studs, or suitable backing boards, plywood may need to be installed behind the panel to properly secure it in place.

Step 2 Screw two of the supplied mounting screws into the wall studs (or backing plywood) 2" from the top of desired height, and 11-1/8" apart, leaving 1/4" of screw out from the wall.

Step 3 Lift and place the panel onto the mounting screws.

Step 4 Screw the two remaining mounting screws into the holes at the bottom of the panel and tighten the top two screws.

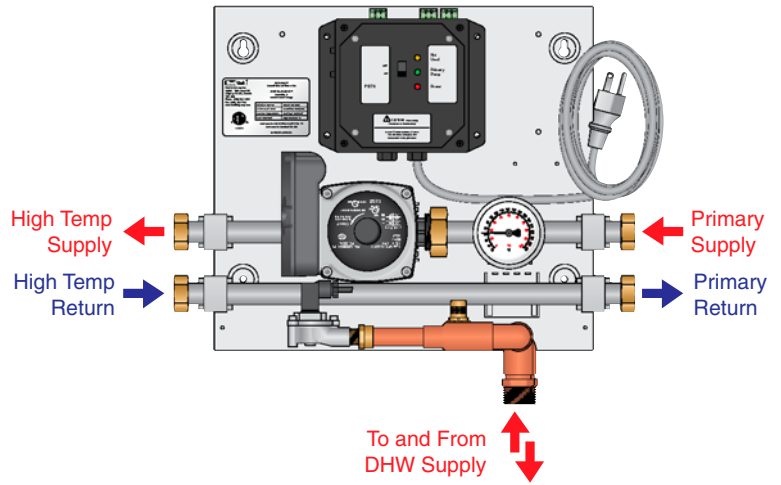
Step 5 Before replacing the enclosure, refer to pages 9-11 for fill and purge, and proper wiring instructions.



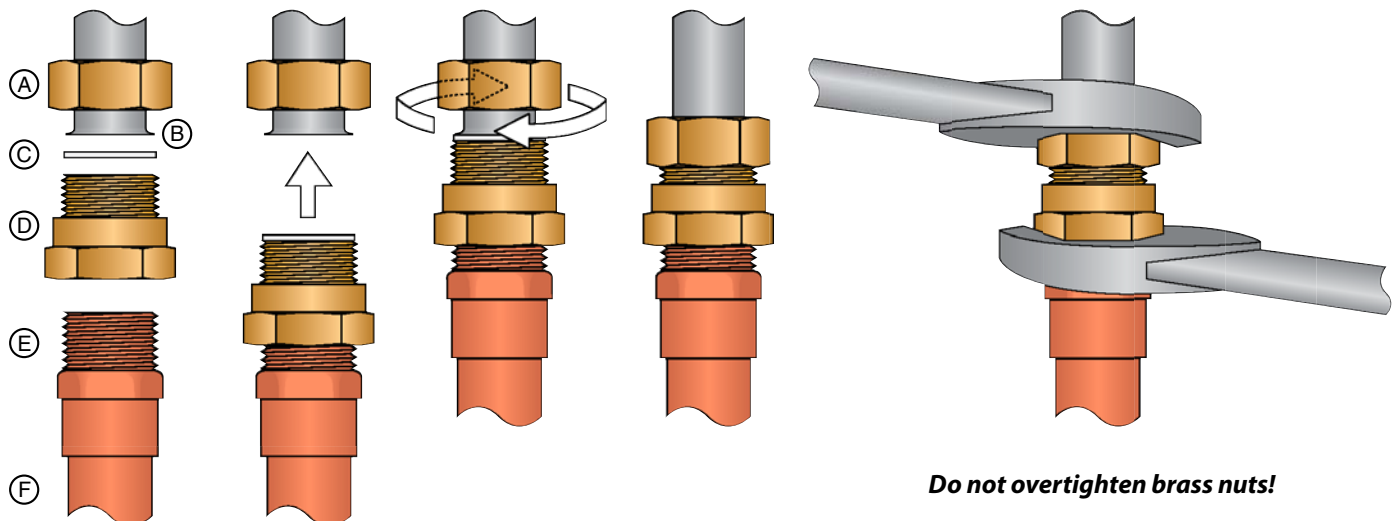
Piping Hookup

Step 1 Before making any connections, identify the required connections to and from the panel.
Adapters are 3/4" M BSPP x 3/4" FPT, and must use the supplied adapters and rubber washers.

Step 2 Connect all adapters.
1. Connect MPT adapter (E) to copper pipe or tubing (F).
2. Screw supplied M x FPT adapter (D) onto (E) using appropriate thread sealant.
3. Take assembly (D)(E)(F) and place rubber washer (C) on flat surface of (D).
4. Without disturbing rubber washer (C), place assembly against flanged stainless steel pipe (B).
5. Slide nut (A) over adapter (D) and first finger tighten nut. Then, using two 30mm wrenches, tighten the nut **taking care not to overtighten the nut**, as this will damage the rubber washer.



Step 3 DHW priority hookup.
DHW connectors are 3/4" MPT.
Using appropriate thread sealant and a backup wrench, connect the water heater output to the input on the DHW priority assembly; and house hot water system to output on priority assembly.
Observe flow direction when making connections.
Be sure to connect the DHW priority **downstream** from the panel (see diagram on page 15).



Do not overtighten brass nuts!

Note: Use precautions when soldering or applying heat within 16" of the panel.

Fill And Purge

The following steps are recommended in order to fill the panel with water and purge entrained air once piping is completed, and before activation of the panel.



The discharged system fluid from the fill and purge process is not for consumption or washing.

Note: *Additional purging steps may be required for the rest of the hydronic system.*

Note: *Isolation and drain valves are not included with the panel, but are necessary to properly fill and purge the panel, and to isolate the panel for service.*

Step 1 Ensure the panel is **not** plugged in.

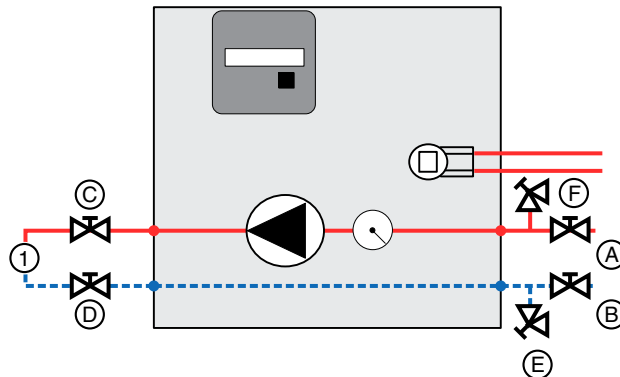
Step 2 Fully close valves (A), (B), and (E). Fully open valves (C), (D), and (F). Since the supply and return do not connect inside the panel, the terminal unit (e.g. fan coil) (1) should be filled at this time.

Step 3 Attach a purge hose (not included) to (F) and a fill hose (not included) to (E). Open valve (E).

Step 4 When exiting water from (F) is free of bubbles, close valve (F), then valve (E).

Step 5 Remove hoses from drain valves and full open valves (A) and (B).

Step 6 Check for leaks at connections. If any leaks are found, use a back-up wrench and carefully tighten until leak stops. **Do not overtighten.**



Panel Wiring

Note: Terminal headers are removable to make wiring connections easier.

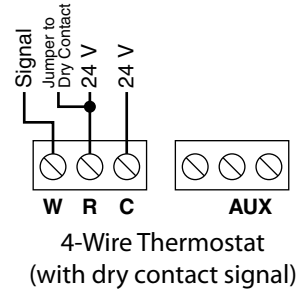
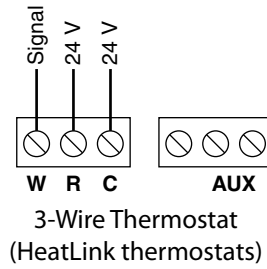
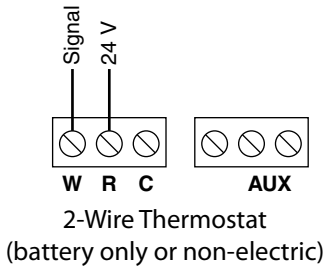
Thermostat Wiring



- 24V low voltage power may be supplied to the thermostat. Wiring of thermostat should be done by qualified electrician and should meet local codes and jurisdictions. Wiring to the terminal strip requires 18 gauge 4 wire.



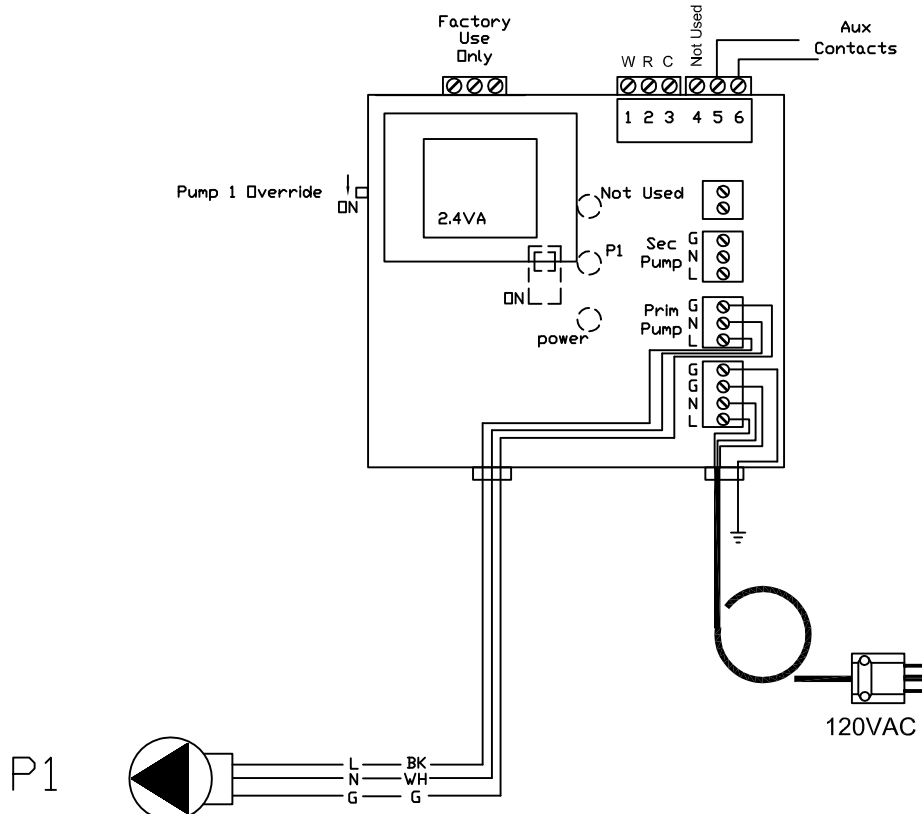
- **Do not exceed 2VA per thermostat.**
- **Do not cross terminals C and R – this will damage the Power Box.**



Other Terminals

Auxiliary Contacts

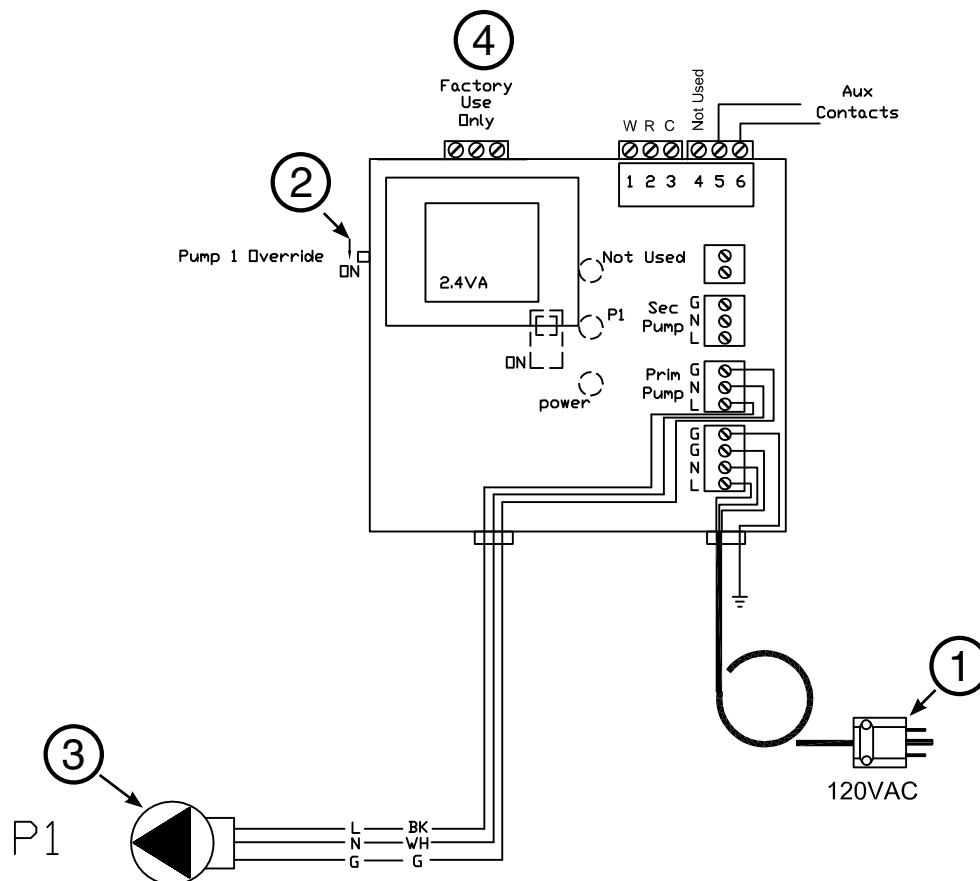
The auxiliary contact set is dry, meaning no supply of power is present at the terminal. The maximum allowable load is 2A. The auxiliary dry contact located on the terminal is to switch another device (ie. the heat source) when there is a call for heat from any zone.



Panel Control Sequence

1. When the power cord ① from the power module and the power switch located on the front of the module is placed in the ON position, the red LED will be lit, indicating that the panel is powered with 110V.
2. The factory setting for the BYPASS switch located on the left side of the power module ② are to remain in the OFF position. Only switch the Primary Pump Bypass switch to ON if the red and green LED's on the power module do not light up during a call for heat. Please refer to the troubleshooting section of the manual for further details.
3. When the thermostat calls for heat, it's internal 24V contacts close, the auxiliary terminals close and the pump ③ turns on.
4. When the requirements of the thermostat are met, the internal contacts of thermostat open, the auxiliary contacts open and the pump stops.
5. The circulator is activated once every 24 hours, for 15 minutes, to ensure that potable water in the piping is not stagnant.

Note: If the DHW flow is above the factory setting for the Flow Indicator device ④, the pump stops. When the DHW flow falls below the minimum factory setting (~0.7 GPM) the panel will return to normal operation.



Troubleshooting

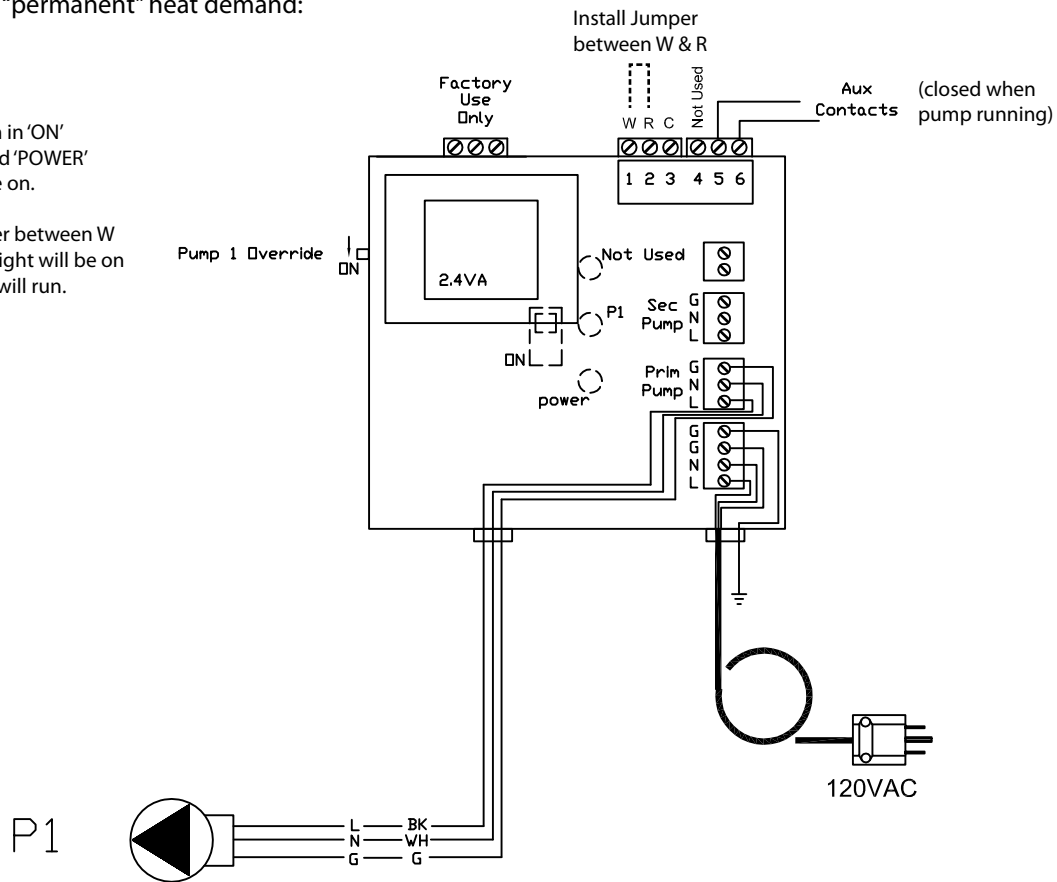
Problem	Check / Verify	Possible Cause
Low Temperature Within Room	Misplacement of thermostat location within room.	Make sure thermostat is not being influenced by an additional heat source, such as lighting or air duct.
	Low temperature setting of the thermostat.	Adjust the temperature setting on thermostat.
	The system fails to turn on if the thermostat is set to high setting	Thermostat may be out of calibration or defective. Replace thermostat.
	The electronic actuator fails to open during a call for heat	The electronic actuator may be improperly seated or may be defective. Replace if necessary.
	Low supply mixed fluid temperature.	Adjust the power box to the appropriate setting.
	Wiring from heat source to panel.	Check that the wiring is done properly. Consult qualified electrician prior to alteration of wiring between heat source and panel.
	Output of heat source is unable to meet demand of heating system.	Compare output of heat source to the requirements of the heating system.
	The red and green LED's on the power module do not light up during a call for heat.	The zone valve controller may be defective or there is no power being supplied to the panel or the power module is not on. If this is so, switch the power module to Bypass mode. The green LED will be lit, indicating that the panel is powered with 110V and the pump will run. This will provide constant circulation so long as there is still 110V power to the panel.
	Circulator is not on during a call for heat. (Use a stethoscope or similar device to verify)	The power box or circulator may be defective.
	When zone valves are installed outside the panel a qualified electrician should verify 24V power is supplied to the thermostats and actuator.	The 24V transformer may have failed. If this so, switch the power module to Bypass mode. This will provide constant circulation so long as there is still 110V power to the panel. Prior to Bypass mode selection, any zone valves must be opened manually to avoid dead-heading of the circulator.
High Temperature Within Room	Check current setting of the thermostat.	Adjust the temperature setting on thermostat to a lower setting.
	High supply mixed fluid temperature.	Adjust the Thermostatic Mixing Valve to the appropriate settings.
	Installed electronic actuators remain open after the thermostat is satisfied.	An obstruction inside the zone valve is not allowing the actuator to fully close or the thermostat is still calling for heat.
	Bypass switch may be on.	Check that the Bypass switch on the power box is in the BY-PASS (OFF) position.

Troubleshooting (continued)

Temporarily create a “permanent” heat demand:

With switch in ‘ON’ position, red ‘POWER’ light will be on.

With jumper between W & R, green light will be on and pump will run.



Maintenance

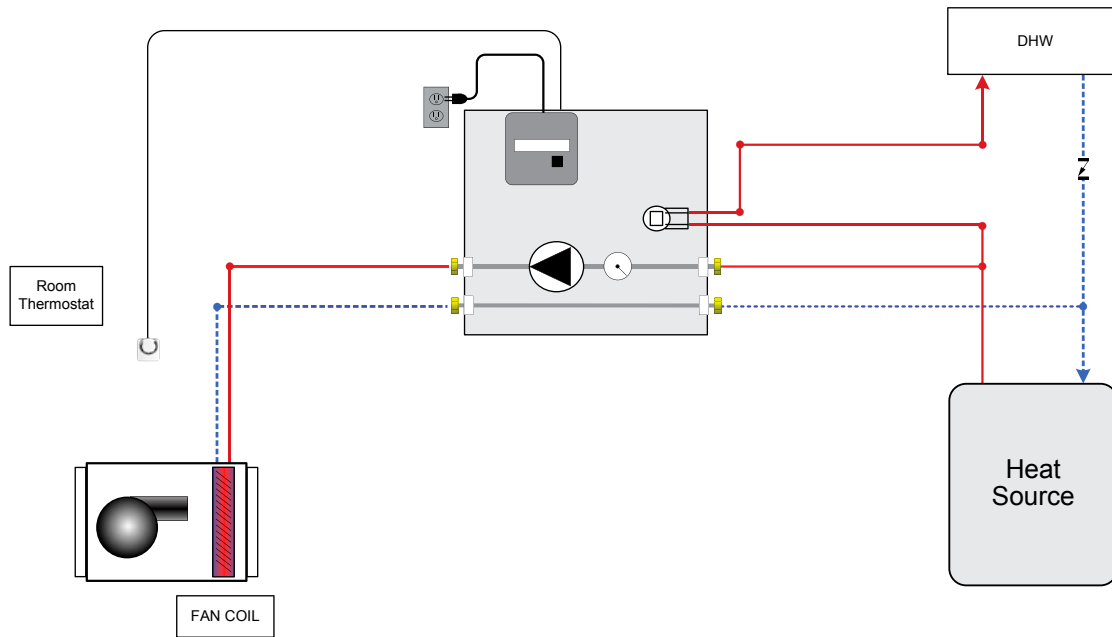
Yearly maintenance should be done on the panel prior to each heating season to ensure the efficient and accurate operation of the panel.

Complete the following check list:

- Raise all thermostats to cause a call for heat within the system. Verify that the circulator starts, via a stethoscope or similar device.
- Confirm that the Auxiliary Contacts close.
- If applicable, verify that each zone valve opens during the call for heat – the actuator should be warm to the touch, the LED will light up (on 5620x models) and the white indicator should rise from the top of the actuator.
- Return all thermostats to a desirable setting.

You are now ready for another heating season with HeatLink.

WHP 130 MBH Water Heater Pump Panel with DHW Priority



Notes:

- A) Check local codes for permissible heat source. Heat sources rated as DHW cannot be used for heating only.
- B) Use of a DHW heat source means that downstream flow must be guaranteed and not restricted (i.e. zoning is not allowed).
- C) This drawing is for illustrative purposes only. It is not intended to be used as a wiring or piping diagram.

Not all required components are shown. Local codes, regulations, and authorities have final jurisdiction.

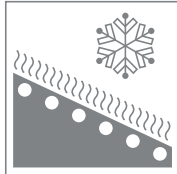


Heat Link® Canada

Manufactured & distributed by HeatLink Group Inc.

Head Office:

4603E - 13th Street N.E.
Calgary, Alberta, T2E 6M3

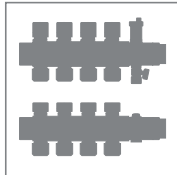


Eastern Canada Distribution Center:

2810 Argenta Road, Units 5-7
Mississauga, Ontario, L5N 8L2

Toll Free: 1-800-661-5332

Fax: 1-866-450-1155

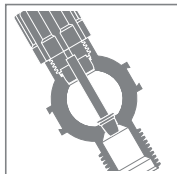


Heat Link® China

Distributed by Cathay-Links International

Phone: 852-25693213

Fax: 852-25359271



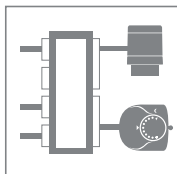
Heat Link® Ireland

Distributed by Jamoni Ltd.

Phone: 057 - 932 4062

Fax: 057 - 932 4063

Freephone: 1800-311338



Heat Link® México

Distributed by Distribuidora Caisa S.A. de C.V.

Phone: (52-55) 3300-4400

Fax: (52-55) 3300-4406



Heat Link® United States

Distributed by HeatLink Group Inc.

USA Distribution Center:

1000 - 100th Street SW, Suite B

Byron Center, MI, 49315

Toll Free: 1-800-661-5332

Fax: 1-800-869-6098

www.heatlinkgroup.com

HeatLink, the HeatLink logo, and "Mechanical Room in a Box" logo are either registered trademarks or trademarks of HeatLink Group Inc.